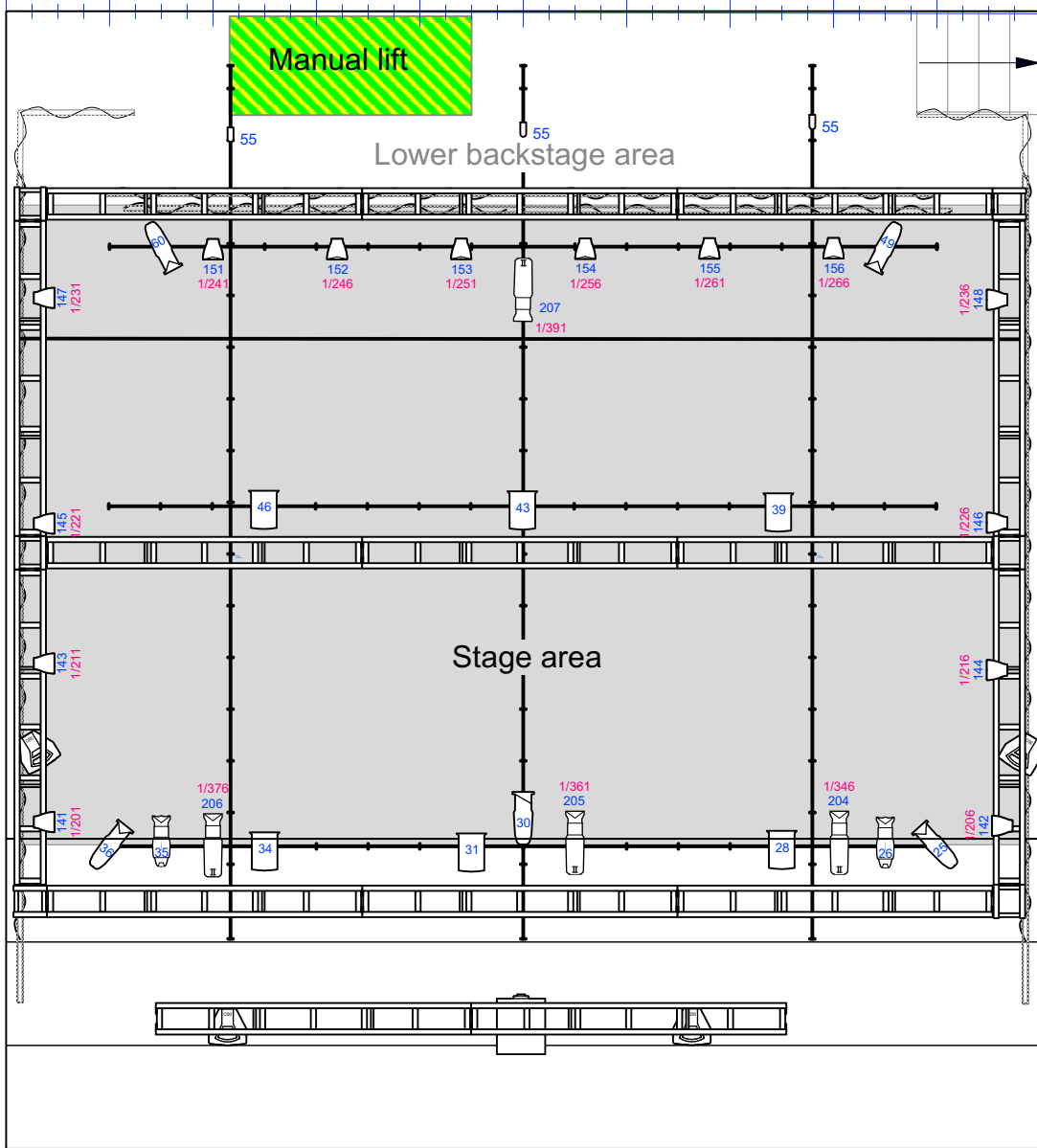
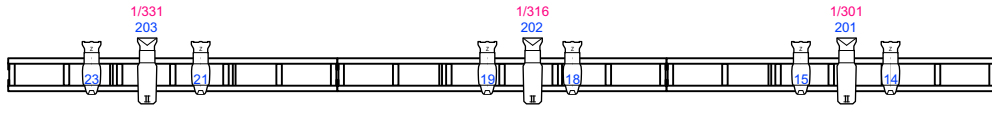


Upper backstage area

5000 4000 3000 2000 1000 0 1000 2000 3000 4000 5000



4000 3000 2000 1000 0 1000 2000 3000 4000 5000 6000 7000 8000 9000



- | | | | | | |
|--|-------------------------------------|---------|--|-------------------------------|---------|
| | ETC ColorSource PAR
Narrow Round | 3.8Kg | | ETC Source4 Jr 50deg | 4.54 kg |
| | ETC ColorSource PAR
Wide Oval | 3.8Kg | | ETC Source4 Jr Zoom | 4.54 kg |
| | ETC Source4 LED2LS
36deg | 10.6Kg | | Strand SL 15/32 Zoom | 6.80 kg |
| | ETC Source4 LED2LS
50deg | 10.6Kg | | Strand SL 23/50 | 6.80 kg |
| | Selecon Rama 6" Fresnel | 4.99 kg | | USITT PAR MR-16
Birdie-MFL | |

The Aldridge studio

The Aldridge studio has a fixed rig as it has a UDL of 1500KG,

Additional weight capacity:
40Kg: down stage
40Kg: mid stage
40Kg: Up stage

*****Anything over 40Kg in these areas must be substituted by derigging an equal amount of weight from the fixed rig*****

House light dimmers
104, 105, 106, 119

Extra seats DD&EE:
120

119 should have a proportion of 40%

Working light addresses
101, 102, 103
55 (rear birds behind the screen)

Not to scale

